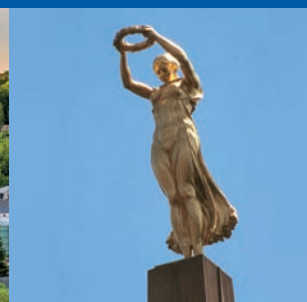


25.10
—
2016

LUXEMBOURG, CHINA'S PARTNER IN EUROPE



 #LFFchina

Tuesday, 25 October 2016 | The Ritz-Carlton Beijing, Financial Street



LUXEMBOURG FOR FINANCE

Agency for the development of the Financial Centre

Luxembourg for Finance (LFF) is the Agency for the Development of the Financial Centre. It is a public-private partnership between the Luxembourg Government and the Luxembourg Financial Industry Federation (PROFIL). Founded in 2008, its objective is to develop Luxembourg's financial services industry and identify new business opportunities.

LFF connects international investors to the range of financial services provided in Luxembourg, such as investment funds, wealth management, capital market operations or advisory services. In addition to being the first port of call for foreign journalists, LFF cooperates with the various professional associations and monitors global trends in finance, providing the necessary material on products and services available in Luxembourg.

Furthermore, LFF manages multiple communication channels, organises seminars in international business locations, and takes part in selected world-class trade fairs and congresses.

12, rue Erasme • P.O. Box 904
L-2019 Luxembourg

Tel. (+352) 27 20 21 1

Fax (+352) 27 20 21 399

E-mail lff@lff.lu



Join Luxembourg for Finance on



©2016 Cour grand-ducale/Christian Aschmann/tous droits réservés

His Royal Highness Prince Guillaume Crown Prince of Luxembourg

On 18th December 2000, His Royal Highness Prince Guillaume was officially appointed "Hereditary Grand Duke of Luxembourg".

His Royal Highness has, since 2001, been honorary President of the "*Board of Economic Development*", the national agency for economic promotion and development, now called "*Luxembourg for Business*". Numerous assignments to promote the Grand Duchy of Luxembourg as a country for investment and business opportunities took him to different countries in Europe, America, Asia and Africa. These were also his priorities in accompanying his parents on State visits to Slovakia (in 2005) and to Germany (in 2012).

Convinced of the necessity for developing new economic models, the Hereditary Grand Duke focuses on the concept of "social businesses" and developments linked to microfinance activities. He also has a strong interest for Luxembourg's craft industry and he is involved in numerous initiatives supporting young citizens.

After his studies in international politics in the United Kingdom, Prince Guillaume continued his studies of these subjects in France, all while witnessing significant geopolitical events. Thus, in 2005, he was able to participate in the "*Millennium Conference*" at the headquarters of the United Nations in New York in June 2009. The Hereditary Grand Duke obtained his bachelor degree – with distinction – in Humanities and Languages, with a specialization in Political Science at the University of Angers (France). From 2003-2005, His Royal Highness completed internships at *Union Chimique Belge* in Brussels, at *Deutsche Bank* in London – enabling him to gain substantial experience in international finance – and at the Spanish branch of the steel company *Arcelor Mittal*.

As a member of the State Council (since 24th June 2005), the Hereditary Grand Duke regularly participates in plenary sessions and he is a member of several boards, making him fully versed in the particularities of national law making and regulation.



HE Paul Steinmetz
Ambassador of the Grand
Duchy of Luxembourg

Embassy of the Grand Duchy of Luxembourg
Unit 1701, Tower B, Pacific Century Place,
2A Gong Ti Bei Lu, Chaoyang District,
Beijing 100027

www.pekin.mae.lu

Paul Steinmetz is the Ambassador in Beijing (China) with co-accreditation to Pakistan and Mongolia.

Mr Steinmetz opened the new Embassy of Luxembourg in New Delhi in 2002. He was then posted six years in Tokyo and he has been serving in Beijing since 2013.

In Luxembourg, he was the assistant to the Secretary General of the Foreign Ministry, desk officer for Asia and subsequently Director General for legal and cultural affairs.

He was seconded to OHR in Bosnia Herzegovina during the Luxembourg EU Presidency in 1997 and before joining the Foreign Ministry, he had spent two years as legal adviser to UNHCR in Geneva.

He holds a degree in public law from Paris University (Assas) and is also a political science graduate.



HE Pierre Gramegna
Minister of Finance,
Grand Duchy of Luxembourg

Ministry of Finance
3, rue de la Congrégation
L-2931 Luxembourg
www.mf.public.lu



A career diplomat, Pierre Gramegna joined the Ministry of Foreign Affairs in 1983. He was subsequently appointed political and economic affairs advisor to the Luxembourg embassy in Paris in 1988, an office he held for four years before being appointed consul general and director of the Board of Economic Development in San Francisco.

From 1996 to 2002, Pierre Gramegna was Luxembourg's ambassador to Japan and South Korea.

He was subsequently responsible for the Directorate of International Economic Relations at the Ministry of Foreign Affairs.

In 2003, Pierre Gramegna took up the position of director general of the Chamber of Commerce, an office he held until his appointment to the government in December 2013. Prior to joining the government, Pierre Gramegna was a member of the executive board of several companies, including in particular Cargolux Airlines International SA (as chairman from 2004 to 2008), the Luxembourg Stock Exchange (Bourse de Luxembourg), the National Credit and Investment Company (Société nationale de crédit et d'investissement), the Del Credere Office (Office du ducroire), LuxExpo Luxembourg and BGL BNP Paribas Luxembourg SA.

He has also been a member of numerous advisory committees, such as the Tripartite Coordination Committee (Comité de coordination tripartite), the Economic and Social Committee of the Greater Region (Comité économique et social de la Grande Région), the Advisory Committee on Foreign Trade (Comité consultatif du commerce extérieur), the Economic Development Committee (Comité de développement économique) and the National Committee for the Promotion of Entrepreneurship (Comité national pour la promotion de l'esprit d'entreprise).



Nicolas Mackel

CEO
Luxembourg for Finance

12, rue Erasme
P.O. Box 904
L-2019 Luxembourg

Tel. (+352) 27 20 21-1

www.luxembourgforfinance.com



@LuxFinance

Nicolas Mackel is CEO of Luxembourg for Finance, the Agency for the Development of the Financial Centre, since July 2013.

Nicolas is a career diplomat. He has graduated with a law degree from the University of Aix-en-Provence, and holds two post-graduate diplomas in European law from the Sorbonne University, respectively the College of Europe in Bruges where he then also served as a teaching assistant in the Law Department. He worked as a legal clerk at the European Court of Justice before joining the Ministry of Foreign Affairs in 1999. His assignments focused on the successive EU Treaty negotiations (Amsterdam, Nice, Constitution, Lisbon).

Nicolas was consecutively posted at Luxembourg's Permanent Representation to the EU (2002-07), as Deputy Chief of Mission at Luxembourg's Embassy in Washington DC (2007-11) and as Consul General in Shanghai (2011-13) where he was in charge of promoting Luxembourg's economic interests throughout China as the Executive Director of the Luxembourg Trade and Investment Office.

PROGRAMME

Tuesday, 25 October 2016

The Ritz-Carlton Beijing,
Financial Street

09.00	WELCOME REMARKS HE Paul Steinmetz <i>Ambassador of the Grand Duchy of Luxembourg</i>
09.05	OPENING SPEECH HRH Prince Guillaume <i>Crown Prince of Luxembourg</i>
09.15	CHINA'S PARTNER IN EUROPE HE Pierre Gramegna <i>Minister of Finance, Grand Duchy of Luxembourg</i>
09.30	KEYNOTE SPEECH Hong Lei <i>Chairman, Asset Management Association of China</i>
09.45	CHINA'S FINANCIAL CENTRE IN EUROPE Nicolas Mackel <i>CEO, Luxembourg for Finance</i>
10.00	NETWORKING BREAK
10.30	INVESTMENT AND FINANCING OPPORTUNITIES Moderator: Robert Scharfe <i>CEO, Luxembourg Stock Exchange</i> Experts: Alain Kinsch <i>Country Managing Partner Luxembourg, EMEA Private Equity Fund Leader, EY</i> Christian Kremer <i>Managing Partner, Clifford Chance, Luxembourg</i> Marco Lichtfous <i>Partner, Deloitte Tax & Consulting, Luxembourg</i> Frank Mausen <i>Partner, Allen & Overy, Luxembourg</i>
11.20	SOLUTIONS FOR ASSET MANAGERS Moderator: Chris Edge <i>Managing Director, PwC, Luxembourg</i> Experts: Steve Bernat <i>CEO Luxembourg, Carne Group</i> Katia Panichi <i>Partner, Elvinger Hoss Prussen, Luxembourg</i> Denise Voss <i>Chairman, Association of the Luxembourg Fund Industry (ALFI) - Conducting Officer, Franklin Templeton Investments, Luxembourg</i> Revel Wood <i>Chief Executive Officer - Conducting Officer, FundRock Management Company, Luxembourg</i>
12.10	NETWORKING LUNCH BUFFET  <i>Simultaneous translation provided English ↔ Chinese</i>

ALLEN & OVERY



A law firm with global reach & local depth,
serving you in China, Luxembourg and Europe.

Allen & Overy is a truly global law practice. Our people, working in 44 offices across 31 countries, are part of an international network assisting the world's most successful businesses implement their strategies on a global stage.

With lawyers based on the ground in every major region, we are able to combine our global reach with in-depth local knowledge.

This means giving our clients intelligent advice in banking, capital markets, corporate and M&A, investment funds, intellectual property, information technology, insurance, employment, litigation, real estate and tax, both in China, Luxembourg and Europe.

In short, we're an international full service practice with local experts.

For further information, please contact
Dr Shaohui Zhang, Head of the Luxembourg-China Desk,
[Tel +352 44 44 55 666, shaohui.zhang@allenovery.com](mailto:shaohui.zhang@allenovery.com).



Speakers (in alphabetical order)



Steve Bernat *CEO Luxembourg, Carne Group*

Steve Bernat is the CEO of Carne's Luxembourg business and a highly experienced investment fund expert with strong background in fund governance and distribution. He is responsible for managing the day to day business of Carne's Luxembourg office and its management company.

Steve has almost two decades of experience in the international funds industry, working to facilitate the requirements of asset management clients from across the globe. He has held a number of senior positions in the industry and has previously worked for Lemanik Asset Management, Citibank, State Street Bank and Pioneer Asset Management.

Steve is a Luxembourg national and speaks English, German, French and Luxembourgish. He is an active member of fund industry committees and working groups and a regular speaker at conferences around the globe.



Chris Edge *Managing Director, PwC, Luxembourg*

Chris has 28 years' experience in the financial services industry, mainly with Chase Manhattan Bank Luxembourg and its successor business under J.P. Morgan. Chris left J.P. Morgan in 2005 to build a business offering savings and investment service propositions for UK retail clients. In 2009/10 he built a mobile payment business in East Africa. Chris re-joined J.P. Morgan in 2011 and was appointed Managing Director of its Luxembourg bank once more. Chris was appointed Head of HSBC Securities Services Luxembourg in September 2014, and led a reanimation of the business for the next two years. In September 2016 Chris joined PwC in Luxembourg in a new role focused around innovation and transformation solutions for the Asset Management sector.

Alain Kinsch *Country Managing Partner Luxembourg, EMEIA Private Equity Fund Leader, EY*



Alain Kinsch, 45, is the Country Managing Partner of EY in Luxembourg, leading an office of over 1.200 professionals. He is as well a member of our regional leadership team. Alain has been active as an advisor and auditor to the Private Equity and the Banking industries since 1995 and he led the set-up of the EY Luxembourg Private Equity practice between 2004 and 2012 that now counts over 250 professionals dedicated to Private Equity.

Today Alain leads the Private Equity fund practice for EY in EMEIA (Europe, Middle East, India, Africa). He is a member of the High Committee of the Financial Sector in Luxembourg and chairs its Alternative Investment Fund Working Group, the co-chairman of the ALFI Private Equity Committee and a member of the Alternative Investment Fund Managers Committee of the Luxembourg financial services regulator (CSSF). Alain is the co-founder and former Vice-President of the Luxembourg Private Equity and Venture Capital Association (LPEA).

Alain is a member of the Luxembourg State Council, a member of the Board of Governors of the University of Luxembourg, the Consul General a.h. of the Republic of the Philippines to Luxembourg and the Vice-President of SOS Villages d'Enfants Monde a.s.b.l. Alain holds an M.B.A. from INSEAD, Fontainebleau, an M.Sc. and B.Sc. from the University of Paris-Dauphine and is a Réviseur d'Entreprises (CPA) in Luxembourg. Alain speaks English, German, French and Luxembourgish.

Christian Kremer *Managing Partner, Clifford Chance, Luxembourg*



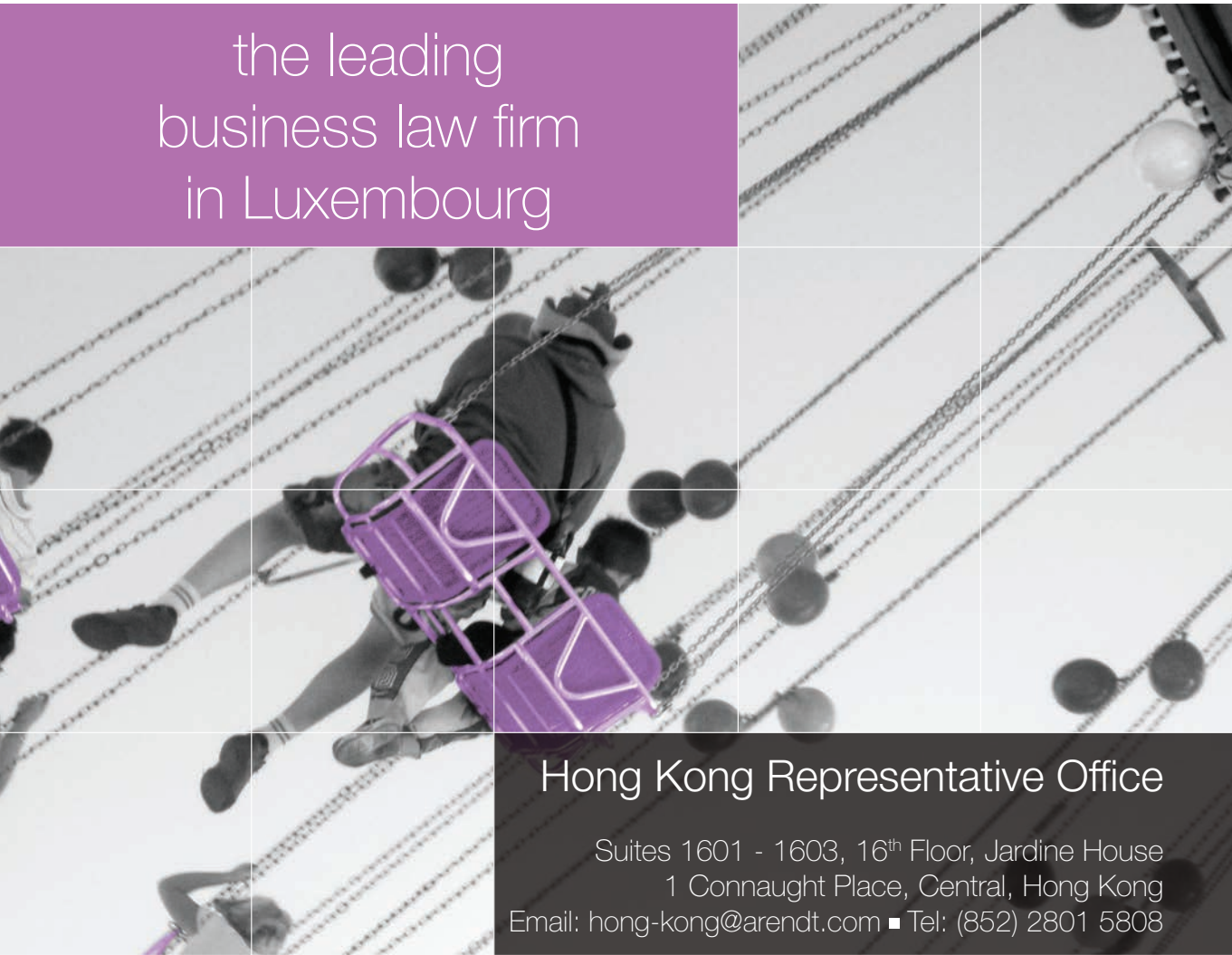
Christian Kremer is the Managing Partner of the Luxembourg office of Clifford Chance and also heads the corporate and capital markets practices. He acts for banks and other financial institutions on regulatory, banking, finance and capital markets matters. He also has a broad corporate, M&A and private funds practice. He has over 25 years of experience in these areas.

He is a member of several committees of the CSSF, the Luxembourg regulator of the financial sector. He is also a member of committees and of the board of directors of the Luxembourg Bankers' Association (ABBL) and a member of the *Haut Comité pour la Place Financière*, an advisory committee to the Luxembourg government.



arendt
arendt & medernach

the leading
business law firm
in Luxembourg



Hong Kong Representative Office

Suites 1601 - 1603, 16th Floor, Jardine House
1 Connaught Place, Central, Hong Kong
Email: hong-kong@arendt.com ■ Tel: (852) 2801 5808

more than 300 experts committed to legal excellence

www.arendt.com

LUXEMBOURG



DUBAI



HONG KONG



LONDON



MOSCOW



NEW YORK



SERVING SOCIETY,
DELIVERING EXCELLENCE



NETHERLANDS
BELGIUM
POLAND

SWEDEN
PORTUGAL



中國銀行
BANK OF CHINA

卢森堡
LUXEMBOURG

CORPORATE BANKING | FINANCIAL MARKET | PERSONAL BANKING | ASSET MANAGEMENT | CUSTODY SERVICE



Hong Lei *Chairman, Asset Management Association of China*

Mr. Hong Lei graduated from the Department of Economics, Peking University. He once served in Beijing Municipal Government and Beijing Securities Regulatory Commission as Deputy Division Director and Division Director and worked in Beijing Securities Co., Ltd., Harvest Fund Management Co., Ltd., and Beijing Zhongxingfa Investment Co., Ltd as Deputy General Manager and Managing Director.

Mr. Hong joined China Securities Regulatory Commission (CSRC) in June 2001 and served as Deputy Director of the Department of Fund Supervision. Between April 2012 and September 2014, he worked as Director-General in the Enforcement Bureau of CSRC. In October 2015, Mr. Hong was named Chairman of Asset Management Association of China after he worked there from October 2014 to October 2015 as Vice Chairman in charge of overall management.



Marco Lichtfous *Partner, Deloitte Tax & Consulting, Luxembourg*

Marco Lichtfous is a Partner with Deloitte in the Advisory & Consulting unit. Prior to joining Deloitte, he was head of prudential supervision at the Banque centrale du Luxembourg (BcL). In this function, he was a long term member of the European Banking Authority's (EBA) Standing Committee on Regulation and Policy (SCRePol).

He moved to the BcL from the Commission de Surveillance du Secteur Financier (CSSF), where he was dealing with Policy Development and the supervision of Liquidity- and Operational Risks. Marco was also a member, since their inception of the Basel Committee on Banking Supervision's (BCBS) Working Group on Liquidity (WGL) and of the Committee of European Banking Supervisors' (CEBS) Task Force on Liquidity.

Before his career in supervision, Marco acquired over 10 years' experience in strategic consulting, restructuring, change management and corporate finance with top employers. He held positions of Associate Director at Omega Capital (M&A Advisory), Vice President Strategic Planning & Business Development at American Express, Senior Manager at A.T. Kearney Management Consultants and Senior Manager at Renaissance Worldwide Strategy Ltd., all in London and New York.

Marco also has significant hands-on experience in senior management as CFO/COO in the healthcare sector, and interim CEO, CFO and COO in the financial sector, among others.

He holds a degree in finance & economics from Universität Trier in Germany and an MBA from UCLA. He speaks several languages fluently and has lived and worked in multiple countries.

A photograph of a modern building with a prominent triangular pediment and a series of vertical columns. The building is illuminated from within, creating a warm glow against the dark blue sky. The image is used as a background for the entire page.

CLIFFORD CHANCE

Clifford Chance's team will provide you with the support you need to achieve your commercial goals. We are unique in being able to offer to our clients specialist teams based in the UK, the US, France, Germany, Italy, Luxembourg, the Netherlands, Spain, the Middle East and Asia. Our international scope sets us apart in terms of the range, speed, consistency and quality of advice that we are able to offer.

Our Luxembourg office's focused commitment to the financial industry puts us at the forefront of the development of cutting edge products and market trends, which in turn results in us providing a value enhancing service to our clients.

Clifford Chance was named the number one law firm in the Chambers Global Top 30 2016.

Clifford Chance shares a global commitment to dignity, diversity and inclusiveness.

ELVINGER HOSS

LUXEMBOURG LAW

Independent in structure and spirit

Elvinger Hoss Prussen established an office in Hong Kong in order to introduce Luxembourg investment structuring capacities to, and share knowledge with, Chinese sponsors so as to facilitate the flow of funds to and from the Mainland and continue supporting the growth of the Chinese economy.

Contact us to discuss how we can support
your business in Luxembourg.

Luxembourg office

2, Place Winston Churchill
L-1340 Luxembourg
Tel: +352 44 66 440
Fax: +352 44 22 55

www.elvingerhoss.lu

Hong Kong Office

Suite 503, 5/F ICBC Tower,
Three Garden Road, Central,
Hong Kong
Tel: +852 2287 1900
Fax: +852 2287 1988



OLYMPIC[®]

BANKING SYSTEM

Universal Worldwide Solution

www.olympicbankingsystem.com

The leading banking software by

eRI[®]

Geneva

London

Lugano

Luxembourg

Paris

Singapore

Zurich



Frank Mausen *Partner, Allen & Overy, Luxembourg*

Frank specialises in securities laws and capital markets regulation, including stock exchange listings. Clients include banks as well as corporate, institutional, supranational and sovereign issuers which he advises on debt and equity transactions and structured finance transactions including securitisation, structured products, covered bonds, IPOs, placements and buy-backs of securities, exchange offers, listing applications and ongoing obligations deriving from such listings. He has 15 years of experience in these areas.

Frank regularly holds conferences on securitisation and other capital markets topics in Luxembourg and abroad. He is a member of the securitisation working group of ALFI (the Association of the Luxembourg Fund Industry) and the securitisation working group and the securities committee of the ABBL (the Luxembourg Bankers' association). Frank is also a member of the Islamic Finance working group of Luxembourg for Finance (Luxembourg's agency for the development of the Luxembourg financial centre) and has recently joined the securitisation working group of the HCPF (an advisory committee set-up by the Luxembourg Ministry of Finance aiming to modernise Luxembourg's financial sector legislation).



Katia Panichi *Partner, Elvinger Hoss Prussen, Luxembourg*

Katia Panichi became a member of the Luxembourg Bar in 1999 and joined Elvinger Hoss Prussen the same year. She became a partner in January 2006. She was on secondment with Slaughter and May (London) in 2002/2003. She is *maître en droit* from the Université-Sorbonne Paris I, and holds an LL.M. in international business law.

Her principal fields of activity are corporate law, mergers and acquisitions, banking law and investment funds and investment companies.

From July 2012 to December 2015 Katia headed the Asian operations in our Hong Kong office. She is registered as a Foreign Registered Lawyer with the Law Society of Hong Kong.

She is a member of the Legal and Regulatory 'Committee of the Luxembourg Association of Investment Funds'. She is fluent in English, French, German, Luxembourgish and Italian.



Robert Scharfe *CEO, Luxembourg Stock Exchange*

Robert Scharfe is the CEO of the Luxembourg Stock Exchange since 2012 and he is a member of the Board of directors of the Federation of European Securities Exchanges as well as the Chairman of the Nomination Committee of the World Federation of Exchanges.

He's a recognized expert in Capital Markets matters and a specialist in Green financing.

Before joining the Luxembourg Stock Exchange, he spent 35 years in the Banking industry, mostly in Corporate Finance and Financial Markets. Between 2000 and 2012 he was a Member of the Management Board of BGL BNP Paribas in Luxembourg. During that time he also assumed senior responsibilities within Fortis Bank in the areas of Institutional Banking and Global Markets.

During his banking career, he acquired extensive knowledge in International Capital Markets and gained solid experience in Asset Management and Investment Funds.

He holds a Master Degree in Economics from the University of Nancy, France, and he is an alumni of Insead, France and Stanford Graduate School of Business, Palo Alto, USA.



Denise Voss *Chairman, Association of the Luxembourg Fund Industry (ALFI) - Conducting Officer, Franklin Templeton Investments, Luxembourg*

Denise is Conducting Officer of Franklin Templeton Investments, she has worked in the financial industry in Luxembourg since 1990. She joined Franklin Templeton Investments in 1995 and is currently Conducting Officer and board member of Franklin Templeton International Services, a Luxembourg-based management company, managing both UCITS and AIFs, in and outside of the EU.

Prior to joining Franklin Templeton Investments, she worked in the audit division of Coopers & Lybrand in Boston, USA and Luxembourg for over 9 years. Denise holds a Massachusetts C.P.A. license and obtained an undergraduate degree from Tufts University, as well as a masters degree in accountancy from Bentley College.

She is Chairman of the Association of the Luxembourg Fund Industry (ALFI), previously Vice Chairman – International Affairs and has been a member of the ALFI board of directors since 2007.



Revel Wood *Chief Executive Officer - Conducting Officer, FundRock Management Company, Luxembourg*

Revel joined FundRock in January 2012 as Director and COO with responsibility for the operational oversight activities of FundRock, covering investment management, distribution, central administrator (CA) and depositary oversight. In this capacity, he oversaw projects with significant investment in risk, compliance and fund governance solutions in response to changing regulation for UCITS and AIFMD. Revel was appointed as CEO of FundRock in October 2013 and also holds a number of directorships.

Prior to joining FundRock, Revel held the position as deputy Managing Director for Northern Trust Luxembourg Management Company S.A, and before moving to Luxembourg was Global Head of Derivative Product for Northern Trust based in London. Revel also held operational management roles at Bank of New York and Schroder in London.

Revel started his corporate career in audit at PwC based in Johannesburg. Before joining PwC, Revel served as a Lieutenant in the military. He later co-founded a trading and import company during his student years.

Does Fortune favour those who are prepared?

Whether it's investing overseas from your Luxembourg base or deciding to invest and expand in China, find out how EY can help you flourish and succeed.

Visit ey.com/lu/China #BetterQuestions

ey.com/lu/China



The better the question. The better the answer.
The better the world works.



Building a better
working world



LOYENS LOEFF

隆路律師事務所

Loyens & Loeff is the natural choice for legal and tax services when you do business in or from Luxembourg, Belgium, the Netherlands and Switzerland, our home markets. We have an outstanding track record in international corporate and commercial matters, banking and finance, investment management, M&A, private equity, real estate, tax and litigation.

We have 13 offices world-wide staffed with approximately 750 legal and tax experts.

Contacts:

Loyens & Loeff, 28/F, 8 Wyndham Street Central, Hong Kong - T +852 3763 9300

Carola van den Bruinhorst

Carola.van.den.Bruinhorst@loyensloeff.com

Thierry Lohest

Thierry.Lohest@loyensloeff.com

www.loyensloeff.com

There are new competitors blooming everywhere.

Is your company agile enough
to outpace them?

Using innovative tools, thinking and
frameworks, KPMG can help adapt
your business in the face of constant
disruption. Learn more at kpmg.lu

Anticipate tomorrow. Deliver today.



Luxembourg, the first European RMB platform



pwc

Luxembourg has developed significant capacities as a prime renminbi hub, **ranking first** amongst the centres handling RMB business in Europe. Luxembourg is also the largest RMB securities settlement centre and the principal listing place for RMB denominated bonds in Europe.

As the leading professional services firm in the country, PwC Luxembourg provides expert advice and customised solutions. Our tax, audit and advisory professionals have unrivalled knowledge and expertise of Luxembourg's fiscal and regulatory landscape. What's more, we have put in place a specialised China team to support and consult both Luxembourg businesses targeting the Chinese market and companies from China looking to expand in Europe.

Our team of highly qualified professionals tackle corporate issues in a wide range of industries. Our clients benefit from our wealth of experience, knowledge and multidisciplinary approach, as well as from the full support of our international network.

China Country Programme Leadership Team

Matt Moran

Leader
+352 49 48 48 2071
matt.moran@lu.pwc.com

Jörg Ackermann

Banking Consulting
+352 49 48 48 4131
jorg.ackermann@lu.pwc.com

Valérie Arnold

Asset & Wealth Management
+352 49 48 48 2285
valerie.arnold@lu.pwc.com

Michael Frigo

Banking Tax
+352 49 48 48 3332
m.frigo@lu.pwc.com

John Parkhouse

CEO
+352 49 48 48 2133
john.m.parkhouse@lu.pwc.com

THE EVENT IS ORGANISED WITH THE KIND SUPPORT OF:

ALLEN & OVERY

arendt
arendt & medernach



C L I F F O R D
C H A N C E

ELVINGER
HOSS
LUXEMBOURG LAW

OLYMPIC
BANKING SYSTEM
— by — **ERI**

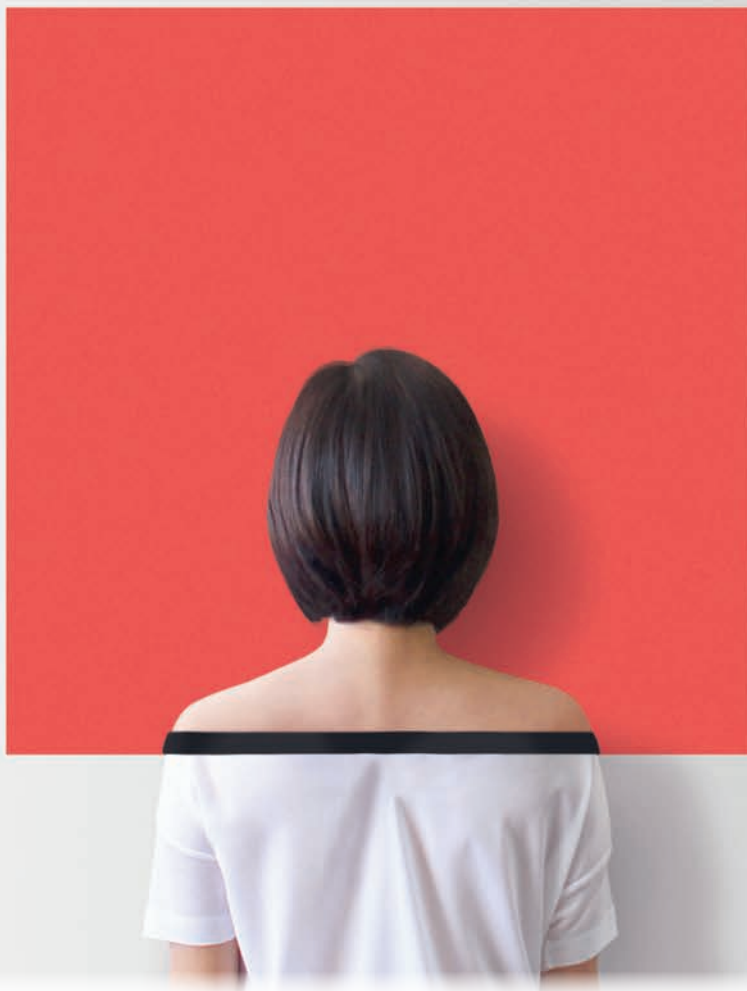


KPMG

LOYENS  LOEFF
AVOCATS À LA COUR



SOLID.



© Getty images

If you're looking for a partner for international growth, you'll probably want one that's predictable, reliable, and forward-looking. You'll probably prefer a place where political instability is not an issue, strong economic performance a given. And why not -- a country that's rated triple-A by the top three credit rating agencies.

Luxembourg. When it comes to solid financial expertise, why look elsewhere?

luxembourgforfinance.com

