

BUILDING THE FINANCIAL SILK ROAD

THURSDAY, 19 SEPTEMBER 2019

The Ritz-Carlton Pudong | Shanghai IFC



WeChat ID: LFF_OFFICIAL

LU X EMBOURG

LET'S MAKE IT HAPPEN



LUXEMBOURG FOR FINANCE

Agency for the development
of the Financial Centre

Luxembourg for Finance (LFF) is the Agency for the Development of the Financial Centre. It is a public-private partnership between the Luxembourg Government and the Luxembourg Financial Industry Federation (PROFIL). Founded in 2008, its objective is to develop Luxembourg's financial services industry and identify new business opportunities.

LFF connects international investors to the range of financial services provided in Luxembourg, such as investment funds, wealth management, capital market operations or advisory services. In addition to being the first port of call for foreign journalists, LFF cooperates with the various professional associations and monitors global trends in finance,

providing the necessary material on products and services available in Luxembourg.

Furthermore, LFF manages multiple communication channels, organises seminars in international business locations, and takes part in selected world-class trade fairs and congresses.

Join Luxembourg for Finance on





HE Pierre GRAMEGNA

Minister of Finance
Grand Duchy of Luxembourg

Ministry of Finance
3, rue de la Congrégation
L-2931 Luxembourg
www.mf.public.lu

Following the legislative elections of 14 October 2018, Pierre Gramegna was re-appointed Minister of Finance in the coalition government formed by the Democratic Party (DP), the Luxembourg Socialist Workers' Party (LSAP) and the Green Party (déi gréng). Pierre Gramegna first joined the government as Minister of Finance in 2013.

As Minister of Finance, Pierre Gramegna has initiated major reforms to balance the budget and to align Luxembourg's tax rules with international transparency standards. Thanks to these efforts, Luxembourg's AAA rating has been consistently confirmed by all major rating agencies and, in 2015, the Global Forum on Transparency and Exchange of Information for Tax Purposes upgraded Luxembourg to "largely compliant". Pierre Gramegna is also a promoter of the diversification of Luxembourg's financial centre, in particular with regard to FinTech and sustainable finance. He is the initiator and president of the LHoFT Foundation, which runs the Luxembourg House of Financial Technology. He has also further developed bilateral relations with China in the financial sector.

Pierre Gramegna puts particular emphasis on Luxembourg's role in multilateral development banks. In 2014, Luxembourg became a member of the African Development Bank and, in 2015, Luxembourg was the first non-Asian country to join the Asian Infrastructure Investment Bank. Currently, he is the chairman of the board of Governors of the AIIB. In May 2016, Pierre Gramegna was elected chair of the Board of Governors of the European Bank for Reconstruction and Development for a one-year mandate. He currently serves on the Board of Governors of the European Investment Bank and on that of the European Stability Mechanism. He is also Luxembourg's governor to the International Monetary Fund, the World Bank and the Asian Development Bank.

Pierre Gramegna studied law and economics at the Université Panthéon-Assas (Paris II), where he was awarded a master's degree in civil law in 1981 and a degree in economic sciences in 1982. He completed his post-university education with a DEA (postgraduate diploma of advanced studies) in European Union law.

As a career diplomat, Pierre Gramegna joined the Ministry of Foreign Affairs in 1983. From 1996 to 2002, Pierre Gramegna was Luxembourg's ambassador to Japan and South Korea. From 2003 to 2013, Pierre Gramegna held the position of Director General of the Chamber of Commerce.



Luc DECKER

Consul General of the Grand Duchy
of Luxembourg in Shanghai
Executive Director of Luxembourg
Trade and Investment Office Shanghai

Consulate General of the Grand Duchy of Luxembourg
907-908, No. 1788 Nanjing Xi Lu
200040 Shanghai

Tel: (+86) 21 63 39 04 00

<http://shanghai.mae.lu>

Since July 2013, Luc Decker is the Consul General of the Grand-Duchy of Luxembourg in Shanghai. He is also the Executive Director of the Luxembourg Trade and Investment Office, a role that aims at strengthening the economic ties between China and Luxembourg. Since January 2018, he is the Dean of the Consular Corps in Shanghai.

Before being appointed as Consul General, Luc Decker was in charge of the Luxembourg Trade and Investment Offices in China and the United States at the Ministry of Economy. In that role, which he held from 2007 to 2013, he assisted Chinese and American investors and companies to set up base in Luxembourg as their gateway to the European market. Prior to this, he was in charge of Press Relations for the Minister of the Economy from 2005 to 2007.

M. Decker studied law and political science in Paris, at the Sorbonne (Université Paris 1) where he obtained his Master's Degree in political science in 2004. He is also a passionate swimmer and represented Luxembourg at the 2000 Olympic Games in Sydney.



Nicolas MACKEL

CEO

Luxembourg for Finance

12, rue Erasme
P.O. Box 904
L-2019 Luxembourg

www.luxembourgforfinance.com

Nicolas Mackel has been the CEO of Luxembourg for Finance, the agency for the development of the financial centre, since July 2013.

Nicolas is a career diplomat. He graduated with a law degree from the University of Aix-en-Provence, and holds two postgraduate diplomas in European law respectively from the Sorbonne University and from the College of Europe in Bruges, where he also served as a teaching assistant in the Law Department.

He worked as a legal clerk at the European Court of Justice before joining the Ministry of Foreign Affairs in 1999. His assignments focused on the successive EU Treaty negotiations (Amsterdam, Nice, Constitution, Lisbon). Nicolas was consecutively posted at Luxembourg's Permanent Representation to the EU in 2002, as Deputy Chief of Mission at Luxembourg's Embassy in Washington DC in 2007 and as Consul General in Shanghai in 2011, where he was in charge of promoting Luxembourg's economic interests throughout China as the executive director of the Luxembourg Trade and Investment Office.

卢森堡金融中心微信帐号
THE LUXEMBOURG FINANCIAL CENTRE ON WECHAT



微信扫描二维码关注
“卢森堡金融推广署”
SCAN THE QR CODE TO FOLLOW
LFF ON WECHAT

WeChat ID: LFF_OFFICIAL



在活动期间及之后，
与参会嘉宾开展沟通交流



*Network during and beyond
the event with attendees*

获取相关资料与视频



*Get access to publications
and videos*

Thursday, 19 September 2019
The Ritz-Carlton Pudong
Shanghai IFC

BUILDING THE FINANCIAL SILK ROAD

09:00	INTRODUCTION Nicolas MACKEL CEO, Luxembourg for Finance
09:05	WELCOME REMARKS XIE Dong Director General, Shanghai Municipal Financial Services Bureau
09:15	TESTING TIMES FOR EU-CHINA RELATIONS HE Pierre GRAMEGNA Minister of Finance, Grand Duchy of Luxembourg
09:30	KEYNOTE SPEECH HOU Weidong Executive Director, EVP, Bank of Communications
09:45	HOW BREXIT RESHAPES EUROPE'S FINANCIAL SERVICES LANDSCAPE Nicolas MACKEL CEO, Luxembourg for Finance
10:00	THE AMAZONISATION OF THE FINANCIAL INDUSTRY Dariush YAZDANI Partner, Global Market Research Centre Leader, PwC
10:15	GLOBAL TRENDS IN SUSTAINABLE FINANCE Julie BECKER Member of the Executive Committee, Luxembourg Stock Exchange
10:30	THE ASSET MANAGEMENT INDUSTRY IN A TURBULENT WORLD Camille THOMMES Director General, Association of the Luxembourg Fund Industry (ALFI)
10:45	AN INCREASED INTEREST FOR PRIVATE EQUITY Claus MANSFELDT President, Luxembourg Private Equity and Venture Capital Association (LPEA)
11:00	NETWORKING COFFEE BREAK



Simultaneous translation provided English ↔ Chinese (Excluding Workshops)

In cooperation with:



GRAND-DUCHÉ DE LUXEMBOURG
Consulat général à Shanghai



GRAND DUCHY OF LUXEMBOURG
Trade and Investment Office Shanghai



上海金融业联合会
Shanghai Financial Association



中国证券投资基金业协会
Asset Management Association of China

ALLEN & OVERY

A law firm with global reach & local depth,
serving you in China, Luxembourg and Europe.

Allen & Overy, a truly international Tier 1 business law firm, has 44 offices in 31 countries and a worldwide reputation that runs alongside local expertise.

In Luxembourg, we are renowned for our innovative thinking and are well placed to provide our clients with commercially viable solutions in increasingly regulated international markets.

Almost all our practice areas (ie Insurance, Investment Funds/Regulatory, Intellectual Property & Information Technology, Banking/Finance & Capital Markets/Regulatory, Corporate, Tax, Employment, Litigation, Real Estate, Fintech, Corporate and M&A) in Luxembourg are Tier 1 according to 2019 Chambers.

We advise on the full range of Luxembourg investment products, including:

- flagship regulated and unregulated vehicles, AIFM and ManCo licenses, joint ventures and co-investment vehicles, Luxembourg investment funds and holding companies;
- cross-border projects with Luxembourg link, including: buying and selling of Luxembourg entities and Luxembourg aspects of financings; and
- the full spectrum of the legal, tax and regulatory matters linked to your project.

For further information, please contact

Miao Wang

Senior Adviser

Tel: +352 44 44 5 5167

miao.wang@allenoverly.com or

Mireille Dallmann

BD Executive

Tel: +352 44 44 5 5226

mireille.dallmann@allenoverly.com

Thursday, 19 September 2019
The Ritz-Carlton Pudong
Shanghai IFC

PARALLEL WORKSHOPS

11:30

WORKSHOP 1: How to connect China's and Europe's green finance markets

Green finance is a strong emerging asset class and a key tool in the fight against climate change. But how can we link green investments to investors across jurisdictions? What can be done to simplify information discovery on green assets internationally? How can disclosure and reporting obligations be fulfilled on a global scale?

Facilitated by: **Fei CHEN** General Manager, ICBC Luxembourg Branch, Chairman, ICBC (Europe)
Robert SCHARFE CEO, Luxembourg Stock Exchange
Dr. YIN Hong Deputy Director of Urban Finance Research Institute, Industrial and Commercial Bank of China,
Deputy Secretary General of Green Finance Committee, China Society for Finance and Banking

11:30

WORKSHOP 2: Raising capital from EU investors looking for China exposure

Over EUR 25 trillion of assets are professionally managed in Europe, and there is a growing interest in exposure to the Chinese market. How can Chinese fund managers access this pool of investors, and what new value can they bring to the table in doing so?

Facilitated by: **Cornelius BECHTEL** Managing Director, Apex Corporate Services Luxembourg
Charlotte CHEN Counsel, Elvinger Hoss Prussen
Christian KREMER Senior Partner, Clifford Chance

11:30

WORKSHOP 3: What to consider when investing in Europe

While Chinese outbound investment in the EU has declined from its 2016 peak, sectors targeted are becoming increasingly diverse and investment techniques more nuanced. What toolbox is available for Chinese investors looking to develop their European portfolios, and how are they best deployed in an era of greater regulatory oversight?

Facilitated by: **Michel FEIDER** Partner, EY
Dr. Jian (Helen) LIANG Executive Board Member, Head of China Desk, Hauck & Aufhäuser Privatbankiers
Thierry LOHEST Partner, Loyens & Loeff
Dr. Marcus PETER Partner, GSK Stockmann

11:30

WORKSHOP 4: Finding your way in the European Fintech regulatory maze

Over the past 10 years there has been an explosion of innovation in financial technology in China. Firms active in this field can grow and internationalise through presence in Europe – but what regulatory pitfalls should they be aware of in doing so?

Facilitated by: **Chris HOLLIFIELD** Head of China Desk, Luxembourg for Finance
Nadia MANZARI Partner, Schiltz & Schiltz
Christoph TUTSCH CEO, ONPEX
Miao WANG Senior Adviser - Investment Funds, Allen & Overy

12:30

NETWORKING LUNCH



Simultaneous translation provided English ↔ Chinese (Excluding Workshops)

In cooperation with:



GRAND-DUCHÉ DE LUXEMBOURG
Consulat général à Shanghai



GRAND DUCHY OF LUXEMBOURG
Trade and Investment Office Shanghai



上海金融业联合会
Shanghai Financial Association



中国证券投资基金业协会
Asset Management Association of China

in Asia
since 2009



your Luxembourg legal and regulatory experts



Arendt & Medernach, Hong Kong
Registered foreign law firm practicing Luxembourg law

Suites 1601-03, 16th Floor, Jardine House
1 Connaught Place, Central, Hong Kong
stephane.karolczuk@arendt.com

arendt.com

Speakers (in alphabetical order)



Cornelius BECHTEL Managing Director, Apex Corporate Services Luxembourg

Cornelius Bechtel is Managing Director of Apex Corporate Services and acts as the Head of Corporate Services & Private Clients for Luxembourg. He furthermore leads and oversees the build out of the Corporate Services & Private Clients service proposal for the Apex Group in Hong Kong.

Cornelius Bechtel has over 25 years of experience in Corporate Management and Fund Administration Services, having held various senior positions with KPMG Financial Engineering, Fortis Intertrust, United International Management, CF Corporate Services SA/BDO and Link Corporate Services (now part of Apex Group).

Next to his professional qualifications as Bankkaufmann and Expert Comptable, Cornelius Bechtel has been certified as an Independent Director from the Luxembourg Institute of Directors (ILA) and has graduated from the INSEAD Independent Directors Programme (IDP-C). Cornelius Bechtel graduated in business administration at the European Business School (ebs) in Germany in 1994.



Julie BECKER Member of the Executive Committee, Luxembourg Stock Exchange

Julie Becker is a member of the Executive Committee and leads International Primary Markets, with responsibility for the management of the listing activities, the promotion and the development of the LuxSE markets for international debt, equities, derivatives and investment funds. She is a confirmed specialist in regulatory, legal and market related matters linked to capital markets transactions and disposes of a proven track record in advising on and integration of regulatory change.

In 2016, Julie Becker initiated and implemented the creation of the Luxembourg Green Exchange or LGX, a new platform dedicated exclusively to green instruments. This initiative, a first in global capital markets, has been rewarded with numerous awards and recognitions worldwide. She also had been appointed in 2016 to the EU High-Level Expert Group on Sustainable Finance.

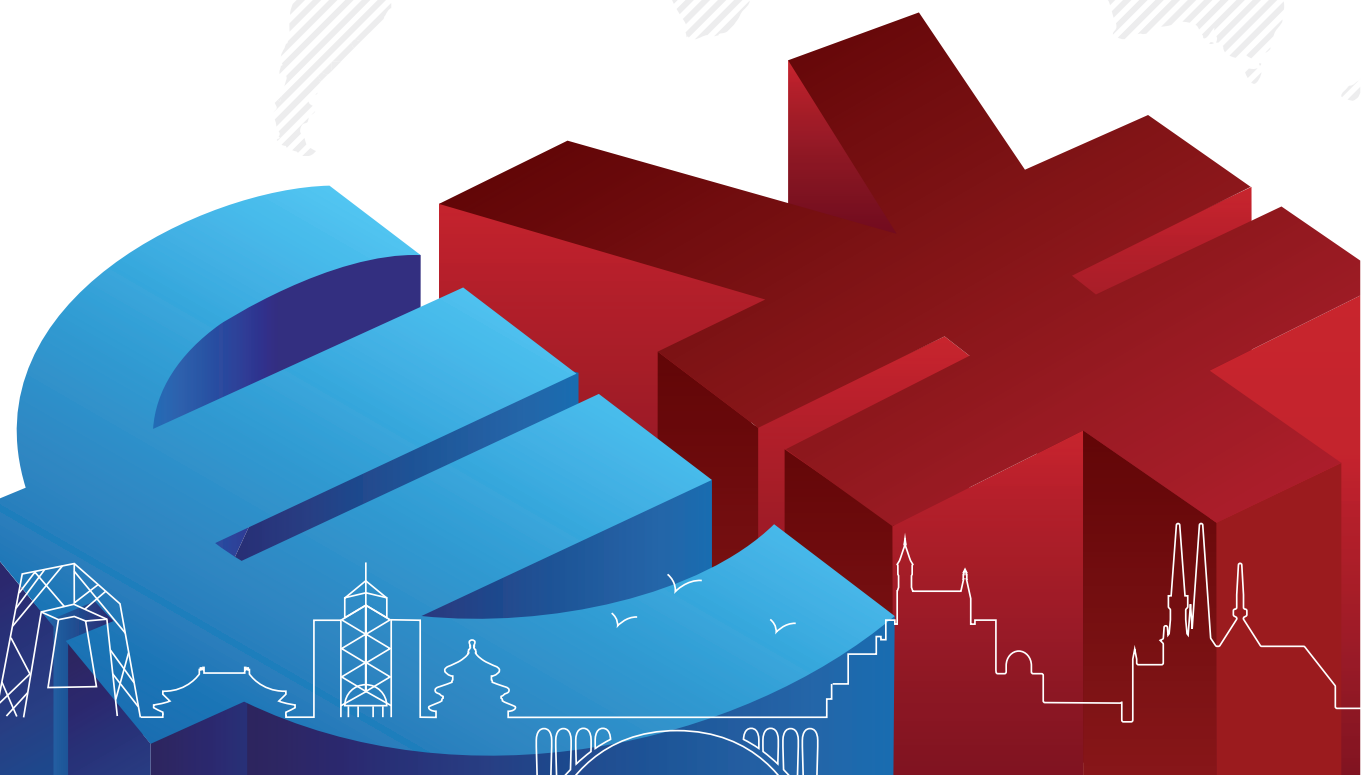
Before joining LuxSE in 2013, Julie had assumed different positions in the Legal and Compliance departments in the banking sector, including at Dexia and the Central bank of Luxembourg.

She holds a Master Degree in European & Corporate Law and a Master Degree (DEA) in Private Law from the University of Nancy II, France, and completed the Advanced training course in Banking and Financial Law of the European Union from the AEDBF & Leuven CCLE, Luxembourg. She is also an alumna of the Wharton Business School, University of Pennsylvania, USA.



ANNIV€RSARY

EXCELLENCE AND COMMITMENT



37/39 Boulevard Prince Henri
L-1724 Luxembourg
+352 26 86 88 300
service.lu@bankofchina.com
www.bankofchina.com/lu/en



中國銀行
BANK OF CHINA

卢森堡

LUXEMBOURG



Charlotte CHEN Counsel, Elvinger Hoss Prussen

Charlotte Chen is located in Hong Kong and practises investment fund and corporate law. She specialises in the field of establishment and structuring of investment funds and participates in acquisition and financing transactions.

Charlotte holds a *maîtrise en droit* from the Université Paris II Panthéon-Assas (France) and a Master's degree in European law from the Université Paris 1 Panthéon-Sorbonne (France).

She is a member of the Regulatory Sub-Committee of the HKIFA (Hong Kong Investment Funds Association) and a member of the Hong Kong Sub-Committee of ALFI (Association of the Luxembourg Fund Industry). Charlotte became a member of the Paris Bar in 2009 and a member of the Luxembourg Bar in 2014.



Fei CHEN General Manager, ICBC Luxembourg Branch, Chairman, ICBC (Europe)

Fei CHEN is a Chinese banker with over 21 years of experiences in ICBC, taking up management roles on the Global Head Office and Regional Headquarters for the overall bank management, client relationship coverage, FX and overseas IT infrastructure within the bank in China and Western Europe.

He currently acts as General Manager of ICBC Luxembourg Branch since June 2017 and sits on the board as Chairman of ICBC (Europe) since October 2015. Prior to that, he was General Manager of ICBC Frankfurt Branch from July, 2012 and General Manager of ICBC (Europe) Brussels Branch since January 2011. He joined ICBC Group upon graduation in 1998 and previously had held a number of management positions within the International Banking Department in ICBC Head Office. He was elected as the founding President of Chinese Chamber of Commerce in Germany and of Chinese Chamber of Commerce in Frankfurt while in Germany.

Fei CHEN holds a Master's Degree in Engineering and a Bachelor's Degree in Economics from Tsinghua University. He is an active promoter of business relations between China and Europe shaping the strategies in Europe.



Michel FEIDER Partner, EY

Michel Feider is a Partner in the Private Equity & Venture Capital practice at EY Luxembourg, comprising 300 professionals.

With more than 15 years of experience in serving leading Alternative Investment Managers and small and mid-sized Alternative Investment Managers around the globe, Michel has gained an in-depth knowledge of the Alternative Investment industry, focusing on private equity (PE), venture capital, infrastructure and debt structures (both regulated and unregulated structures). He regularly provides training on matters related to the PE sector such as valuation in the private equity & venture capital industry and on the IPEV guidelines on behalf of the EVCA.

Over the past few years, Michel has led assurance assignments for a large number of Alternative Investment funds investing in a wide range of underlying assets and pursuing several separate strategies. Michel also provides support for setting up and structuring Alternative Investment vehicles in the regulated and unregulated sectors in Luxembourg.

Michel is also member of the Valuation Committee of the Luxembourg PE and VC Association (LPEA), of the PE committee of the Luxembourg Fund Association (ALFI) and of the valuation and reporting working group of InvestEurope.



Chris HOLLIFIELD Head of China Desk, Luxembourg for Finance

Chris Hollifield is Head of China Desk at Luxembourg for Finance (LFF), where his work involves advising fintech and financial companies looking to develop cross-border activity through Luxembourg-based platforms. He also advises on the development of the ecosystem in Luxembourg and on synergy creation with other key financial centres, with a focus on the China market.

Prior to working at Luxembourg for Finance, Chris worked in the strategy department of Clearstream Banking, an International Central Securities Depository that facilitates the settlement of interbank transactions in over 50 markets worldwide. His work focused particularly on strategic projects in fintech and market development in the East Asian region.

Chris holds an MA in Chinese Studies from Cambridge University and speaks three languages professionally (English, Chinese, French).

BIL, your privileged gateway to Europe



Founded in 1856, Banque Internationale à Luxembourg (BIL) is not only the oldest but also one of the biggest multi-business banks in Luxembourg. Its longstanding experience and extensive local knowledge enable BIL to offer comprehensive financing solutions to Chinese investors wishing to diversify in Luxembourg.

BIL is largely Chinese-owned thanks to its majority shareholder Legend Holdings. This strong link to China means that BIL is uniquely positioned to help Chinese business owners and institutional investors leverage the Luxembourgish financial hub for doing business in Europe.

Luxembourg has long been a pioneering international financial centre. Its political and economic stability and its location at the heart of the continent make it an ideal gateway to Europe for private and institutional investors from around the world.

Together for you



BANQUE
INTERNATIONALE
À LUXEMBOURG
卢森堡国际银行

PRIVATE BANKING – CORPORATE BANKING – FINANCIAL MARKETS – RETAIL BANKING

DENMARK – DUBAI – LUXEMBOURG – SWEDEN – SWITZERLAND

Banque Internationale à Luxembourg SA, 69 route d'Esch, L-2953 Luxembourg, RCS Luxembourg B-6307, T (+352) 4590-1, www.bil.com

C L I F F O R D C H A N C E

GLOBAL LAW FIRM OF CHOICE FOR LEADING BUSINESSES IN LUXEMBOURG



Clifford Chance's team will provide you with the support you need to achieve your commercial goals. Our international scope sets us apart in terms of the range, speed, consistency and quality of advice that we are able to offer.

Our Luxembourg office commitment to the financial industry puts us at the forefront of the development of cutting edge products and market trends, which in turn results in us providing a value enhancing service to our clients.



Christian KREMER Senior Partner, Clifford Chance

Christian Kremer is Senior Partner of the Luxembourg office of Clifford Chance. He heads the Corporate and Capital Markets practices.

Christian Kremer has 30 years of experience acting for private equity houses, banks and other financial institutions on regulatory, banking, finance and capital markets matters. He has a broad corporate, M&A and private equity practice. He also has a strong experience in finance and capital markets transactions, as well as on Fintech projects and insurance matters.

He is a member of several committees of the CSSF, the Luxembourg regulator of the financial sector. He is also a member of committees of the Luxembourg Bankers' Association (ABBL) and a member of the *Haut Comité pour la Place Financière*, an advisory committee to the Luxembourg government.



Dr. Jian (Helen) LIANG Executive Board Member, Head of China Desk, Hauck & Aufhäuser Privatbankiers

Dr. Jian (Helen) LIANG is Executive Board Member and Head of China Desk at Hauck & Aufhäuser since 2017. She is responsible for Fosun Synergies, China Business Development and M&A business.

In 2009, Dr. Liang joined Commerzbank Frankfurt Headquarter and worked as credit officer mainly responsible for DAX listed companies. Then, Dr. Liang has been assigned to Asian Headquarter of Commerzbank in Shanghai with major responsibility of senior credit project manager for credit strategy, process and regulatory requirements.

In 2012, Dr. Liang started to work as Managing Director & Deputy General Manager of Commerzbank Beijing Branch, and was leading the China Desk and responsible for cross-border transactions of corporate banking.

Starting in September 2015, Dr. Liang was working as Executive Director in the private banking & Wealth Management division at Fosun Group.


She has completed her PhD studies at Frankfurt School of Finance & Management with the scholarship from DAAD. She has obtained a doctorate in Economics with a major in Finance.

ELVINGER HOSS

LUXEMBOURG LAW

Legal advice to the highest precision

Independent in structure and spirit, Elvinger Hoss Prussen guides its clients on their most critical Luxembourg legal matters. We are ranked top tier by Chambers & Partners, IFLR 1000 and Legal 500.



Contact us to discuss how we can support
your business with Luxembourg legal matters.

LUXEMBOURG | HONG KONG

Elvinger Hoss Prussen
www.elvingerhoss.lu

NEW YORK

Elvinger SARL PLLC
www.elvinger.us



Thierry LOHEST Partner, Loyens & Loeff

Thierry Lohest, attorney at law, is a partner of the Corporate Practice Group at Loyens & Loeff. He focuses on mergers and acquisitions, corporate finance, capital markets and restructurings for multinationals.

Thierry has more than 25 years of experience in M&A, corporate finance, capital markets and restructurings. He divides his time between the Hong Kong and the Luxembourg offices.

Thierry is admitted to practice in Luxembourg and Belgium and is a registered foreign lawyer in Hong Kong. He teaches international business law at the Luxembourg School of Business.



Claus MANSFELDT President, Luxembourg Private Equity & Venture Capital Association (LPEA)

Claus Mansfeldt is the President of the Luxembourg Private Equity & Venture Capital Association (LPEA). He has served on the Board of Directors of the LPEA since 2016 and is a member of its Executive Committee.

Claus is also the Chairman & Managing Director of SwanCap Luxembourg. SwanCap is a specialist private equity investment manager with offices in Munich, Luxembourg, Milan and New York. With some €3bn under management, SwanCap invests in PE Funds, Direct Co-Investments and Secondaries.

Prior to SwanCap, Claus held senior management positions at UniCredit entities in London, including Head of Principal Investments. He started his career at Nomura International, where he spent 12 years in the Merchant Banking area, focused on principal investments in Emerging Europe, and initially in international Capital Markets.

Claus holds a BSc (Econ) from the London School of Economics & Political Science (LSE).



Nadia MANZARI Partner, Schiltz & Schiltz

Nadia Manzari is a Partner at Schiltz & Schiltz.

Before joining the firm in 2018, Nadia was the Head of the Innovation, Payments, Markets Infrastructures and Governance Department at the Commission de Surveillance du Secteur Financier (CSSF), where she started her career in 2001.

She is a regular speaker at national and international conferences covering payment services, financial technologies, remuneration policies and corporate governance.

She graduated in law from the University Robert Schuman in Strasbourg and holds a master degree in private law (maîtrise en droit privé, mention "droit des affaires") as well as a postgraduate DJCE diploma (Diplôme de Juriste Conseil d'Entreprise) degree with a focus on German-French business law. She holds the Certificate in Corporate Governance of INSEAD and is an ILA certified director.



Dr. Marcus PETER Partner, GSK Stockmann

Dr. Marcus Peter heads the Investment Funds and Private Equity practice at GSK Stockmann in Luxembourg. He is a lawyer in Germany (since 2004) and Luxembourg (since 2005) and obtained his LL.M and Ph.D. degrees from the European Institute in Saarbruecken, Germany.

Prior to GSK Stockmann in Luxembourg, Dr. Marcus Peter has worked for a Luxembourg law firm from 2004 to 2016 (last 4 years as partner). Since 2016, he is a partner at GSK Stockmann in Luxembourg. Dr. Marcus Peter is an expert in Luxembourg Investment Funds & Private Equity law, Mergers & Acquisitions and Corporate Law.

Dr. Marcus Peter is a member of the Luxembourg Private Equity Association (LPEA), Chinese-Luxembourgish Chamber of Commerce, DAV Luxembourg, EVER and CBBL (Cross Border Business Lawyers).

What's the right path to accelerate your growth journey?

Discover how EY Luxembourg helps you
navigate new growth markets.

ey.com/lu/china



The better the question. The better the answer. The better the world works.



International business
is full of pitfalls.



Better to touch down
with experienced legal
support.

GSK Stockmann – Your gateway to Europe.

- > Corporate / M&A / Private Equity
- > Investment Funds
- > Capital Markets
- > Banking & Finance
- > Regulatory
- > Real Estate
- > Insurance
- > Tax

www.gsk-lux.com

LUXEMBOURG
GSK Luxembourg SA
44, Ave John F. Kennedy
L-1855 Luxembourg
Tel +352 2718 0200
luxembourg@gsk-lux.com

GSK STOCKMANN

GSK. THE DIFFERENCE.

BERLIN FRANKFURT/M. HAMBURG HEIDELBERG MUNICH LUXEMBOURG



Robert SCHARFE CEO, Luxembourg Stock Exchange

Robert Scharfe is the CEO of the Luxembourg Stock Exchange since 2012 and he is a member of the Board of directors of the Federation of European Securities Exchanges as well as the Chairman of the Nomination Committee of the World Federation of Exchanges.

He's a recognized expert in Capital Markets matters and a specialist in Green finance.

Before joining the Luxembourg Stock Exchange, he spent 35 years in the Banking industry, mostly in Corporate Finance and Financial Markets. Between 2000 and 2012 he was a Member of the Management Board of BGL BNP Paribas in Luxembourg. During that time he also assumed senior responsibilities within Fortis Bank in the areas of Institutional Banking and Global Markets.

During his banking career, he acquired extensive knowledge in International Capital Markets and gained solid experience in Asset Management and Investment Funds.

He holds a Master's Degree in Economics from the University of Nancy and he is an alumnus of Insead and Stanford Graduate School of Business, Palo Alto.



Camille THOMMES Director General, Association of the Luxembourg Fund Industry (ALFI)

Camille Thommes is the Director General of ALFI, the Association of the Luxembourg Fund Industry. He joined the association back in 2007.

Before joining ALFI, Camille Thommes was in charge of the Investment Fund Department at the State and Savings Bank, Luxembourg (BCEE) from 2001-2006, after holding various senior positions in the Securities & Custody department since 1993. He started his professional career in 1986 at BGL (now BGL BNP Paribas) where he held positions in the Securities and Custody Divisions.

He is a member of the Board of Directors of the Luxembourg Supervisory Authority (CSSF) and a member of the Consultative Committee for Prudential Regulation. Camille is also a member of the High-Level Committee of the Financial Centre set up by the Ministry of Finance. Furthermore, he represents ALFI at the Board of Directors of the European Fund and Asset Management association (EFAMA) and is a Board member of the Luxembourg Financial Industry Federation (PROFIL).

Camille holds a Master's Degree in Economics from the University Louis Pasteur in Strasbourg (France), completed the Accelerated Development Program at the London Business School and accomplished traineeships in London and New York.



Christoph TUTSCH CEO, ONPEX

Christoph Tutsch is the founder and CEO of ONPEX. He started the company in 2013 with the goal to provide businesses with an ideal solution for online payments and digital transactions. An accomplished payments expert, he saw the need for a solution to manage all financial processes in one single platform. Christoph oversees the strategic positioning of ONPEX and the development of its solutions.

A lifelong entrepreneur, Christoph co-founded and directed several companies in the telecom and marketing industries. Online payments first sparked his interest in 2000, when billing internet services on telecom bills. In the following years, he transferred directly into payments to build third party processing for a PSP. There was no flexible, modular and scalable technology that a modern payment infrastructure should have. This resulted in Christoph's main motivation to add greater simplicity to the payments industry.



Miao WANG Senior Adviser - Investment Funds, Allen & Overy

Miao Wang is a Senior Adviser within Allen & Overy's Luxembourg Investment Funds & Fund Regulation practice and a key member of its Luxembourg-APAC Desk.

She has extensive experience advising on the formation of private investment funds and advising on the downstream transactions stemming from those funds. She also regularly assists investors on their investments in funds. Prior to joining Allen & Overy's Luxembourg office, Miao gained seven years of experience working in other leading law firms based in Hong Kong and in Beijing. She has considerable expertise advising Chinese clients on their investment fund projects and fund-related matters.



¥es. €an do.

The answer to your needs for Cross-Border RMB Business.

As the world's largest bank in RMB business, ICBC is your global partner offering proactive solutions for your financial needs in RMB. With world-wide network, featured and diversified products, integrated and secured IT platform, we are committed to provide you with professional RMB services and assist your development in international trade and investment.

www.icbc-ltd.com

Your Global Partner.
Your Reliable Bank.





Legal and tax leading experts

LOYENS  LOEFF

隆路律師事務所

LEGAL AND TAX ADVICE

Contacts

Ewout Stumphius
Ewout.Stumphius@loyensloeff.com

Thierry Lohest
Thierry.Lohest@loyensloeff.com

Unit 3708, 37/F The Center, 99 Queen's Road Central
Central, Hong Kong
T +852 3763 9300

Loyens & Loeff is the natural choice for legal and tax services when you do business in or from Luxembourg, Belgium, the Netherlands and Switzerland, our home markets.

We have an outstanding track record in international corporate and commercial matters, banking and finance, investment management, M&A, private equity, real estate, tax and litigation.

We have 11 offices world-wide staffed with approximately 950 legal and tax experts.

> loyensloeff.com



Dariush YAZDANI Partner, Global Market Research Centre Leader, PwC

Dariush Yazdani, Partner, leads the Global Market Research Centre within PwC Luxembourg. He has more than 20 years of experience in the financial services industry. He has led and contributed to various research and thought leadership studies, as well as strategic consulting for clients.

Client assignments include the development of market entry studies and strategies for multiple global and regional asset managers, product and fee benchmarking reports, as well as reports for the EU Commission. He was member of the editorial board of the AWM Revolution Embracing Exponential Change, Pressure on Profitability and Rising attractiveness of alternative asset classes for Sovereign Wealth Funds. He holds a MBA from the University of Chicago, GSB.



Dr. YIN Hong Deputy Director of Urban Finance Research Institute, Industrial and Commercial Bank of China, Deputy Secretary General of Green Finance Committee, China Society for Finance and Banking

Dr. YIN Hong, Ph.D. in Economics, is now Deputy Director of Urban Finance Research Institute at Industrial and Commercial Bank of China as well as Deputy Secretary General of Green Finance Committee at China Society for Finance and Banking.

She is in charge of researches on financial theory and practice of commercial banks, green finance, industry analysis, credit risk, social and environmental risks, etc. with 16 years of experience in credit and investment management, particularly credit policy, process design and risk management.

In recent years, her dedicated researches on green finance, such as the environmental stress testing on commercial bank's credit risk, ESG rating and green index, have been among the top tier worldwide. She is also the lead author of several books on green finance, such as "*Case Studies of Green Finance in China*" and "*International Case Studies of Green Finance Development*", among others. As the head of UK-China Climate and Environmental Information Disclosure Pilot Action Plan on the Chinese side, she takes the lead to establish and implement the framework of environmental information disclosure for financial institutions in China.



Luxembourg, an attractive financial centre for Chinese players

The Luxembourg financial centre has established excellent reputation in various fields, such as banking, asset management and private equity over years. It has also established robust regulatory requirements for opening the market to new Payment Service Providers within the European Union. Following the international expansion into the European market, Luxembourg is an attractive financial centre for Chinese financial service players and more recently FinTech companies.

As the leading professional services firm in the country, PwC Luxembourg provides expert advice and customised solutions. Our tax, audit and advisory professionals have unrivalled knowledge and expertise of Luxembourg's fiscal and regulatory landscape. What's more, we have put in place a specialised China team to support and consult both Luxembourg businesses targeting the Chinese market and companies from China looking to expand in Europe.

Our team of highly qualified professionals tackle corporate issues in a wide range of industries. Our clients benefit from our wealth of experience, knowledge and multidisciplinary approach, as well as from the full support of our international network.

China Country Programme Leadership Team

John Parkhouse, CEO

+352 49 48 48 2133

john.parkhouse@lu.pwc.com

Jörg Ackermann, China Desk Lead

+352 49 48 48 4131

jorg.ackermann@lu.pwc.com

Xiaoyan Huang 黄小燕, China Desk Director

+352 49 48 48 3820

xiaoyan.huang@lu.pwc.com

Matt Moran, China Desk M&A and Strategy Lead

+352 49 48 48 2071

matt.moran@lu.pwc.com

Michael Frigo, China Desk Tax Lead

+352 49 48 48 3332

m.frigo@lu.pwc.com

Julie Batsch, China Desk Audit Lead

+352 49 48 48 2467

julie.batsch@lu.pwc.com



www.pwc.lu

© 2019 PricewaterhouseCoopers, Société coopérative. All rights reserved. In this document, "PwC" or "PwC Luxembourg" refers to PricewaterhouseCoopers, Société coopérative which is a member firm of PricewaterhouseCoopers International Limited, each member firm of which is a separate legal entity. PwC IL cannot be held liable in any way for the acts or omissions of its member firms.

NOTES

NOTES

THANK YOU

This event is organised with the kind support of:

ALLEN & OVERY



FUTURING ASSET MANAGEMENT

LUXEMBOURG IS READY FOR THE FUTURE OF ASSET MANAGEMENT

Futuring is about building on experience and anticipating future needs. Global capital flows continue to grow in strength, bringing investment to businesses around the world. As Europe's leading fund hub and the home of global fund distribution, Luxembourg is working hard at the centre of this process. Each day, Luxembourg's highly efficient fund services environment connects with retail and institutional investors across the world and channels capital into productive use, bolstering global prosperity and stability.

With a particular focus on the next generation of investors, the asset management's dynamism is being fine-tuned by the development of new technologies. It's no accident that the first fund transaction using blockchain technology was completed in Luxembourg. The fund industry will become global, digital and green. Luxembourg will be there every step of the way.

luxembourgforfinance.com